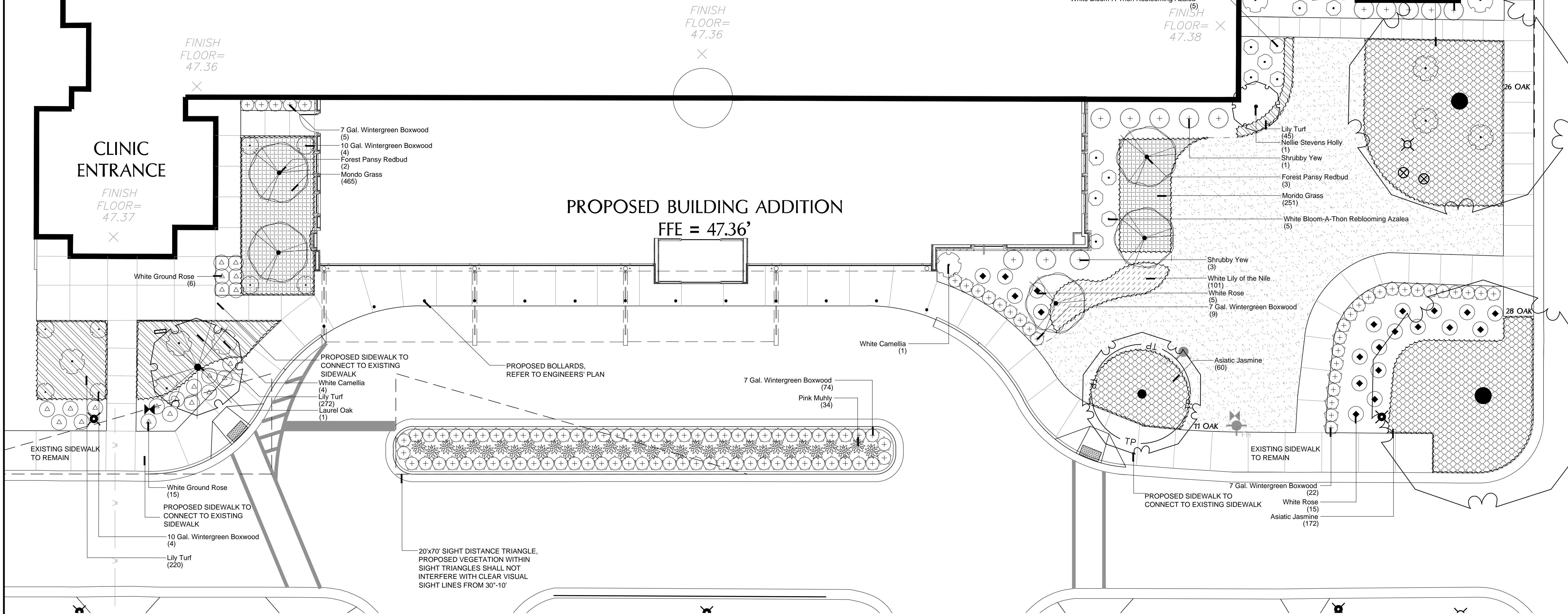


# ZIMMER CANCER CENTER MAIN ENTRANCE



## PLANT SCHEDULE

TREES	BOTANICAL NAME / COMMON NAME	CONT	CAL	RANGE	QTY
	Cercis c. 'Forest Pansy'™ / Forest Pansy Redbud	25 GAL	3" CAL	8-10' HT	5
	Ilex x 'Nellie R Stevens'™ / Nellie Stevens Holly	B & B		8-10' HT	1
	Quercus laurifolia / Laurel Oak	B&B	6" CAL	14-16' HT	1
SHRUBS	BOTANICAL NAME / COMMON NAME	SIZE	RANGE	QTY	
	Buxus m. 'Wintergreen' / 10 Gal. Wintergreen Boxwood	10 gal	24-36" HT	8	
	Buxus m. 'Wintergreen' / 7 Gal. Wintergreen Boxwood	7 gal	12-18" HT	112	
	Camellia sasanqua 'Hana Jiman' / White Camellia	25 gal	6' HT	10	
	Muhlenbergia capillaris / Pink Muhly	3 gal	18-24" HT	34	
	Podocarpus macrophyllus maki / Shrubby Yew	15 gal	5-6' HT	13	

	Rhododendron x 'Bloom-a-thon' / White Bloom-A-Thon Reblooming Azalea	7 gal	24-30" HT		15
	Rosa x 'Flower Carpet White'™ / White Ground Rose	3 GAL	12-18" HT		21
	Rosa x 'Knockout'™ / White Rose	7 gal	24-30" HT		20
GROUND COVERS	BOTANICAL NAME / COMMON NAME	SIZE	RANGE	SPACING	QTY
	Agapanthus africanus 'White' / White Lily of the Nile	1 GAL	12-15" HT	14" o.c.	101
	Liriope muscari / Lily Turf	1 qt	12-15" HT	12" o.c.	537
	Ophiopogon japonicus / Mondo Grass	1 qt	12-15" HT	12" o.c.	716
	Trachelospermum a. 'Asiatic' / Asiatic Jasmine	1 qt	6-12" HT	24" o.c.	452
SOD/SEED	BOTANICAL NAME / COMMON NAME	SIZE	RANGE	SPACING	QTY
	Sod / Sod ' Match Existing Species'	sod			2,761 sf

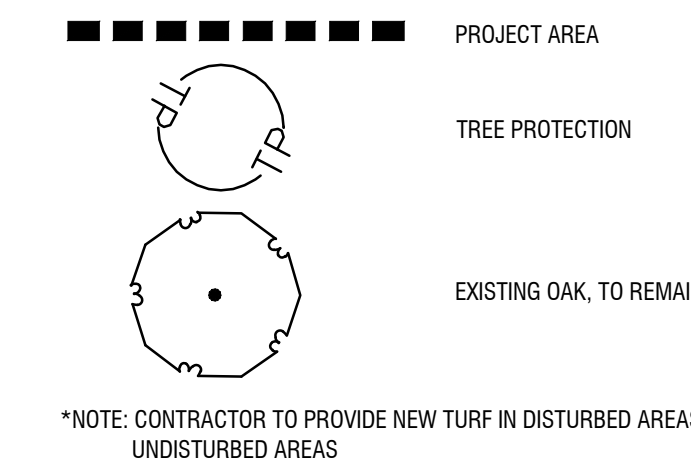
## LANDSCAPE REQUIREMENTS

ADDRESS: 2131 SOUTH 17TH STREET  
 PARCEL ID: R06011-004-001-000

TOTAL PROJECT AREA: 1.54 ACRES  
 EXISTING ZONING: O&I-1 - OFFICE AND INSTITUTIONAL  
 URBAN LAND CLASSIFICATION: HOSPITAL CANCER TREATMENT (NHRMC)

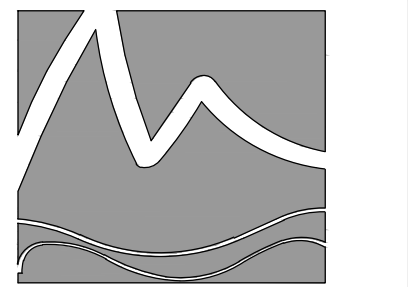
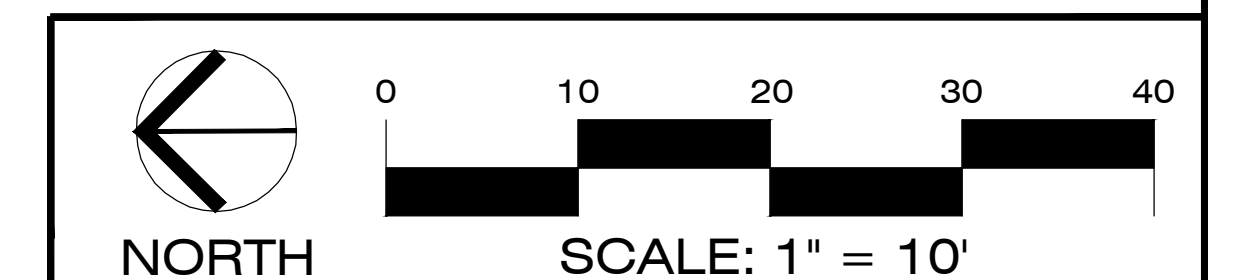
LANDSCAPE REQUIREMENTS	REQUIRED	PROVIDED
FOUNDATION PLANTINGS (240 LF'x33")x12	950 SF	3,461 SF
15 TREES PER ACRE DISTURBED (0.37 AC'x15)	6	9 (3 EXISTING) (6 PROPOSED)

## LEGEND



## GENERAL PLANTING NOTES

- THIS WORK INCLUDES, BUT IS NOT LIMITED TO THE FURNISHING OF ALL LABOR, MATERIALS, EQUIPMENT, FINAL GRADING, SEEDING, SOIL AMENDMENTS, ETC., AS MAY BE REQUIRED FOR A COMPLETE INSTALLATION.
- QUANTITIES SHOWN IN PLANT LISTS ARE FOR CONVENIENCE ONLY. PLANS SHALL GOVERN.
- THE LANDSCAPE CONTRACTOR SHALL NOTIFY THE LANDSCAPE ARCHITECT OF ANY DISCREPANCIES IN PLANT LOCATIONS OR INSUFFICIENT PLANT QUANTITIES DUE TO DIFFERENCES IN PLAN AND ACTUAL FIELD CONDITIONS.
- ALL TREE AND SHRUB MATERIAL SPECIFIED MUST MEET STANDARD INDUSTRY SPECIFICATIONS FOR THE CONTAINER SIZE INDICATED. DOWNSIZING OR SUBSTITUTION OF PLANT MATERIAL WITHOUT PRIOR APPROVAL OF LANDSCAPE ARCHITECT WILL NOT BE ALLOWED.
- ALL LANDSCAPE AREAS SHALL BE GRADED TO A SMOOTH EVEN SURFACE PRIOR TO ANY PLANT INSTALLATION. ALL PLANT MATERIALS SHALL BE INSTALLED USING GOOD HORTICULTURAL PRACTICES IN ACCORDANCE WITH THE PLANS AND DETAILS.
- TREES SHALL NOT BE PLANTED CLOSER THAN FOUR (4) FEET FROM ANY WALKWAY OR PUBLIC SIDEWALK EXCEPT WHERE TREE WELLS OR PARKWAYS ARE PROVIDED IN THE SIDEWALK AREA. ALL TREE PLANTED WITHIN FIVE (5) FEET OF WALKS OR PUBLIC UTILITIES SHALL RECEIVE DEEP ROOT BARRIERS.
- TREE LOCATIONS SHOWN ON PLAN MAY REQUIRE ADJUSTMENT IN THE FIELD. WHENEVER FEASIBLE, TREES SHOULD BE PLANTED A MINIMUM OF TEN (10) FEET FROM ALL UNDERGROUND UTILITIES, STREETLIGHTS, HYDRANTS, AND OUT OF DRAINAGE FLOW LINES. SHOULD THIS NOT BE POSSIBLE, CONTACT THE LANDSCAPE ARCHITECT FOR DECISION ON PLACEMENT.
- ALL TREES IN TURF AREAS SHALL HAVE 12" MIN. CLR. CIRCUMFERENCE AROUND THE TRUNK BASE. PROVIDE 2" MIN. THK. MULCH AT BASE OF TRUNK.
- GROUND COVER TYPE SHOWN SHALL BE PLANTED IN ALL SHRUB AREAS AS SPECIFIED ON PLANS. GROUND COVER SHALL BE PLANTED AT 8" ON-CENTER UNIFORM TRIANGULAR SPACING, AND SHALL BE CONTINUOUS UNDER ALL TREE AND SHRUB MASSES AS SHOWN ON PLAN.
- MATURE PLANTINGS SHALL NOT INTERFERE WITH UTILITIES AND TRAFFIC SIGHT LINES.
- ALL PLANTING AREAS SHALL BE MULCHED WITH PINE STRAW, EXCEPT FOR AREAS PLANTED WITH GROUND COVER. ALL AREAS PLANTED WITH GROUND COVER SHALL BE MULCHED WITH HARDWOOD MULCH.



**MIHALY**  
 LAND DESIGN  
 PLANNING + LANDSCAPE ARCHITECTURE  
 330 Military Cutoff Rd., Suite A3  
 Wilmington, NC 28403 910.392.4355



## Revisions

**CLIENT**  
 ZIMMER CANCER CENTER RENO. LS3P ASSOCIATES LTD.  
 2825 INDEPENDENCE BLVD. SUITE 200  
 WILMINGTON, NC  
 PHONE: 910.790.9901

## PROJECT

## CONSTRUCTION SET

Date: 04/15/2016  
 Phase: CD  
 Job Number: 560-05  
 Designed by: MLD  
 Drawn by: MAS  
 Checked by: JWM

Sheet Title:  
 PLANTING PLAN

Sheet Number  
**L1.1**  
 of 1 sheets